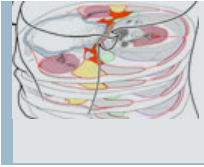


13 Faszienvhältnisse des Kopfes (suprahyoidaler Halsraum) und Halses



1. Theorie

A. Kopf

B. Hals

2. Präparation

1. Theorie

A. Kopf

Verfolgen Sie - soweit noch vorhanden - die 3 Faszienschichten des Kopfes:

Lamina superficialis
Lamina profunda
Fascia buccopharyngea

Bestimmen Sie die wichtigsten Faszienräume des Kopfes:

Spatia intrafascialia
Spatia peripharyngealia
Spatium retropharyngeum
Spatium lateropharyngeum (-parapharyngeum)
Spatium submandibulare
Spatia intrapharyngea
Spatium paratonsillare
Spatium perivertebrale

B. Hals

Verfolgen Sie - soweit noch vorhanden - die 3 Faszienschichten des Halses.

Bestimmen Sie die wichtigsten Faszienräume des Halses:

-Vagina carotica
- praetrachealer/praeviszeraler Raum
- retropharyngealer/retroviszeraler Raum (Spatium colli medium)
- Danger-Space (nach Grodinsky und Holyoke)

Video:

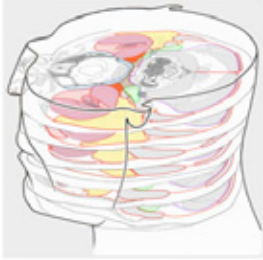
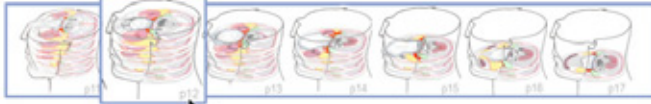
FILM: Thorax; Pleura and Superior Mediastinum
University of Michigan

FILM: Lateral Pharyngeal Wall
University of Michigan
The anatomy of the lateral pharyngeal wall and associated structures using a human cadaver.

Abb. 13-1:



Abb. 13-2:



Legende

InfI	infraorbital nerve
Inf	glossopharyngeal nerve
IOh	vagus nerve
IOa	accessory nerve
IOh	hypoglossal nerve
AMC	ala major cartilage
AsA	ascending palatine artery
Alas	alae
AOc	atlanto occipital joint
BucM	buccinator muscle
buon	buccal nerve
cem2	cervical nerve 2
DAv	dens axis
DM	diaphragm muscle
dpc	deep cervical artery and vein
ectA	external carotid artery
fac	facial artery
facv	facial vein
Gnac	greater nasal cartilage
gocn	greater occipital nerve
OZM	greater zygomatic muscle
HPB	hamulus of the pterygoid bone
lav	anterior alveolar artery, vein and nerve
icaA	internal carotid artery
ivpA	internal jugular vein
OCcM	oblique capitis muscle
ivvA	internal vertebral venous plexus
LAngD	levator anguli oris muscle
LevAF	levator veli palatini muscle
LgCapM	longus capitis muscle
LgColM	longus colli muscle
LgCapN	lingual nerve
ling	lingual nerve
LLB	levator labii sup. muscle
OCM	oblique capitis muscle
Man	mandible
masM	masseter muscle
MZM	mental zygomatic muscle
MSpM	medial pterygoid muscle
MScaI	medial scalenus muscle, insertion of
Mv	levator scapulae muscle
Ma	maxilla
NasM	nasalis muscle
rl	ruchal ligament
ncA	nasosphenoid artery, incisive canal
ocA	occipital artery and vein
pal	greater palatine artery and vein
PalG	palatine gland
Par	parotid gland
paA	posterior auricular artery and vein
PMa	posterior minor rectus capitis muscle
PMaM	posterior major rectus capitis muscle

Flash

2. Präparation